

TRAKIT-20

TRAKIT-15

Intelligent GPS data logging. Capture location data for detailed analysis of vehicle activity. Dynamic speed and heading parameters are used in addition to time intervals to record location records.

TRAKIT-20

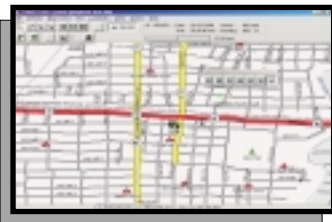
Basic real-time tracking of vehicle fleets. Monitor current activity while recording historical data in the on-board data buffer. Program parameters and download data over-the-air. Radio
Cellular
Passport

TRAKIT-25A

Included are all of the features of the TRAKIT-20. Enhanced capability accommodates numerous inputs and outputs including various sensors and mobile vehicle terminals. Radio
Cellular

TRAKIT-25D

For use on digital communications systems. All of the TRAKIT intelligent AVL features are included for use on digital communications infrastructures. EDACS
CDPD
APCO-25



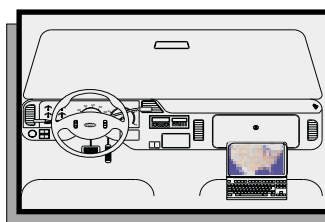
TRAKIT-USA

Monitor activity of an entire fleet of vehicles. Use multiple screens and table displays for easy reference. Features include zone alerts and map landmarks. Exclusive Point & Click data feature is an on-line graphical maintainable database.



TRAKIT-ANALYZER

Perform analysis of vehicle activity from data captured from the TRAKIT system. Graphs provide an at-a-glance depiction of vehicle activity. Reports show the actual route taken by a vehicle complete with time stamps of recorded locations. Location listings include physical addresses for each location.



TRAKIT SUPERVISOR MONTIOR

This software is installed in a laptop computer in the vehicle. The fleet supervisor sees where he is as well as where the other fleet vehicles are located.



ROUTE ACCOUNT ANALYSIS

Analyze vehicle activity by stop locations. Stops are geo-referenced in the system. Each time the vehicle visits one of the registered locations the arrival time, departure time and durations are recorded and captured.